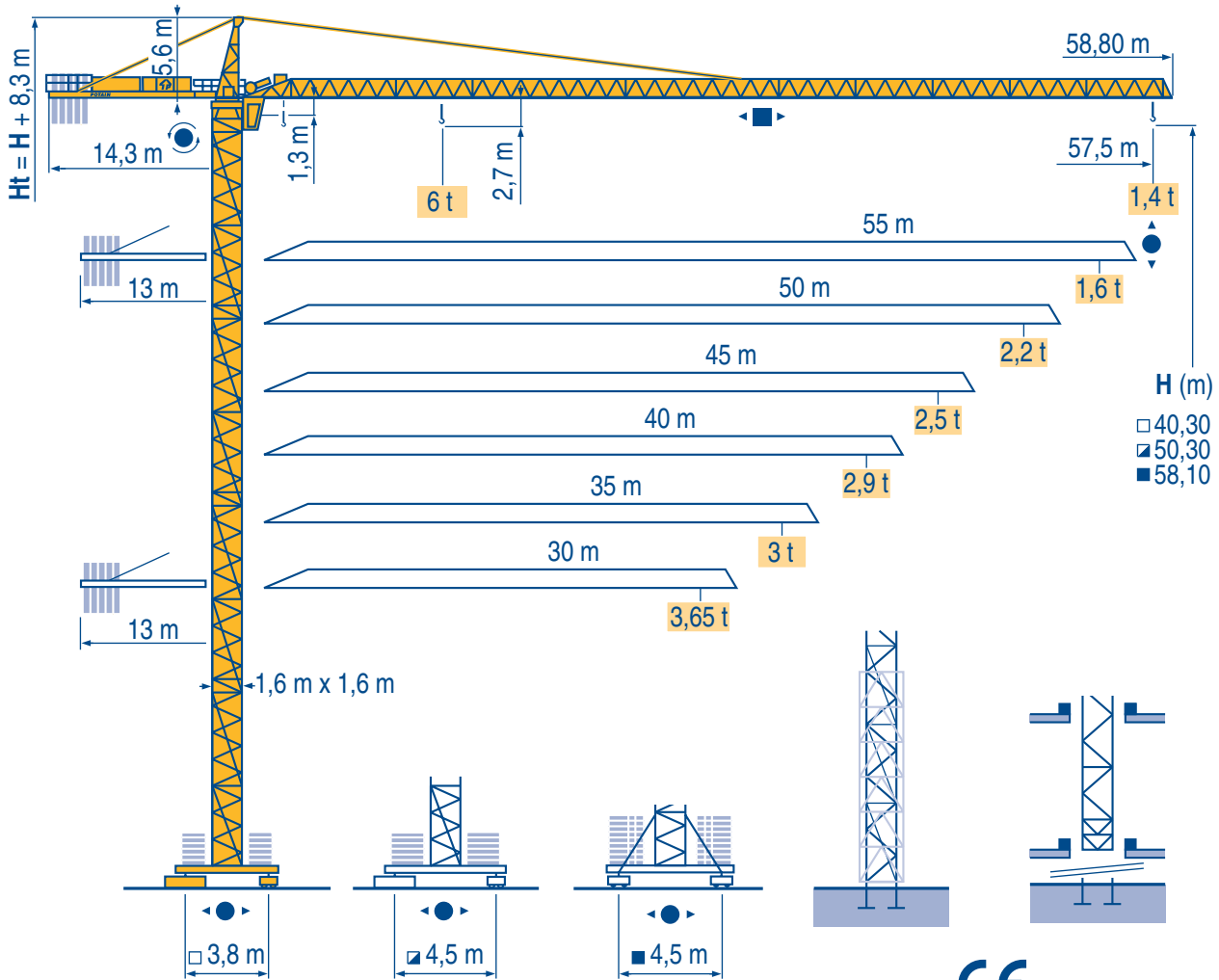


CITY CRANE MD 125 A



- HD
- HDT
- GTMR
- CITY CRANE
- TOPKIT MD
- MR
- MAXI MD
- MAXI TOPKIT

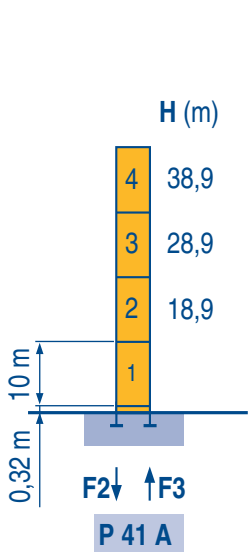
CE FEM 1.001-A3



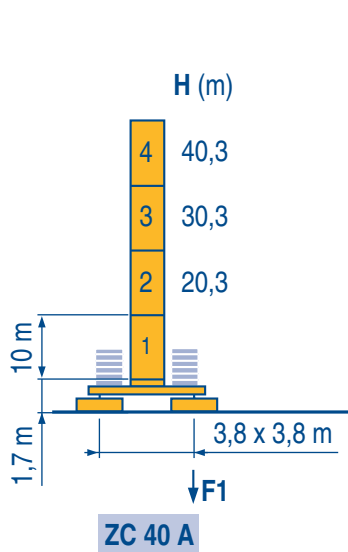
Mat / Réactions
Maste / Eckdrücke
City 1,6 m

F **Masts / Reactions**
D **Mástil / Reacciones**
City 1,6 m

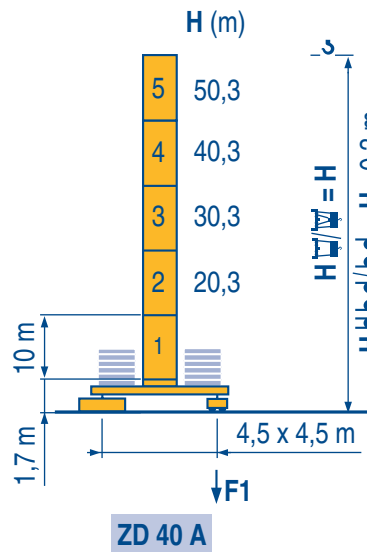
GB **Torre / Reazioni**
E **塔身 / 反力**
City 1,6 m



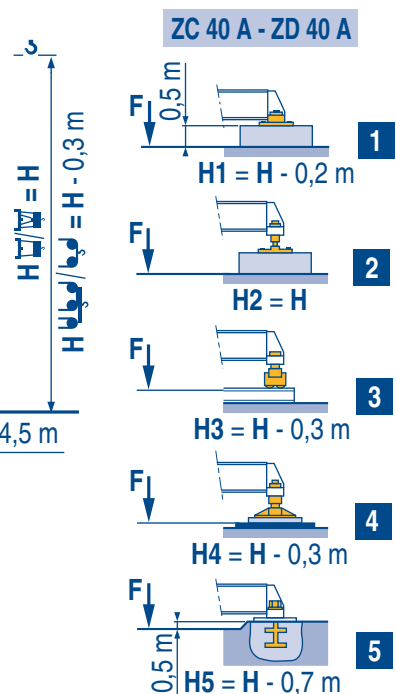
F2	● 80 t	■ 88 t
F3	● 54 t	■ 64 t
	▲ 31 t	



F1	● 58 t	■ 63 t
	▲ 35 t	



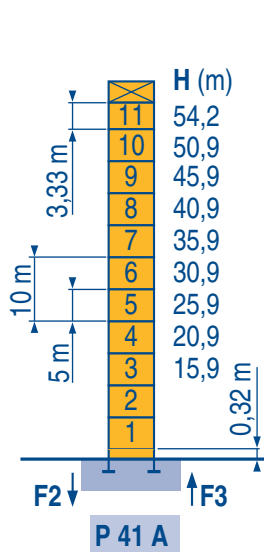
F1	● 65 t	■ 83 t
	▲ 40 t	



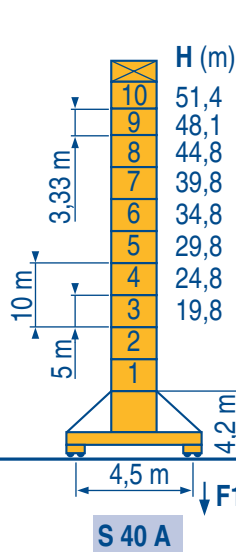
Télescopable 1,6 m
Teleskopierbar 1,6 m

F **Telescopic 1,6 m**
D **Telescopico 1,6 m**

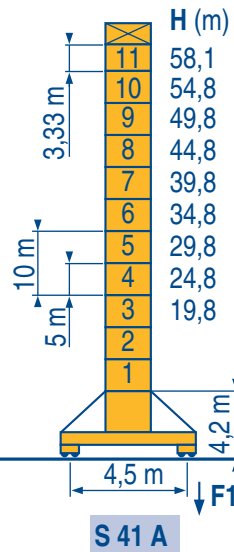
GB **Telescopico 1,6 m**
E **可顶升 1,6 m**



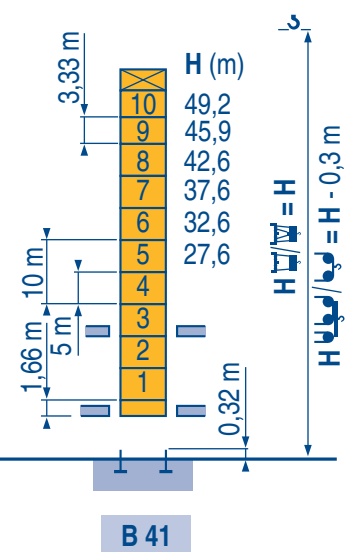
F2	● 115 t	■ 173 t
F3	● 81 t	■ 142 t
	▲ 46 t	



F1	● 73 t	■ 96 t
	▲ 50 t	



F1	● 86 t	■ 121 t
	▲ 54 t	



F Voir télescopage sur dalles
● Réactions en service
■ Réactions hors service
▲ A vide sans lest avec flèche et hauteur maximum.

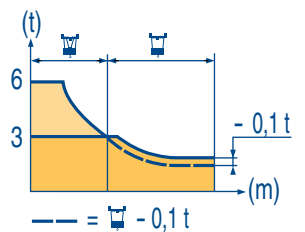
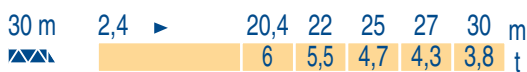
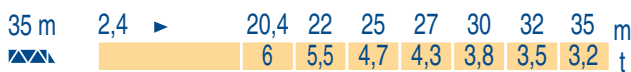
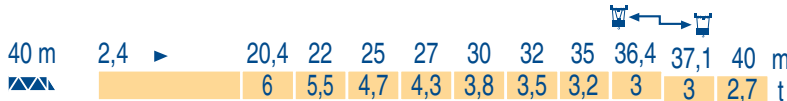
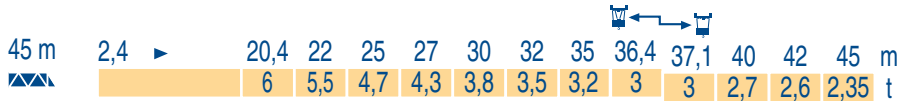
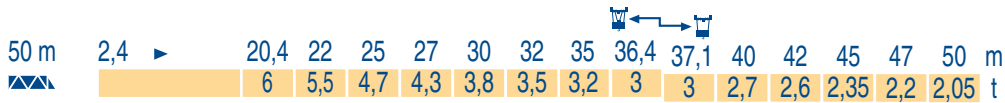
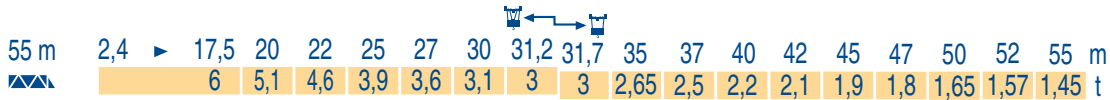
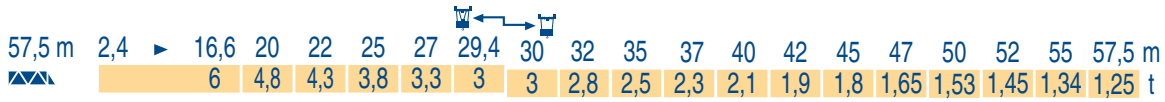
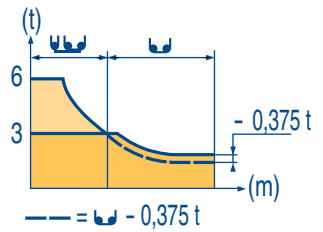
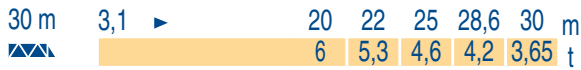
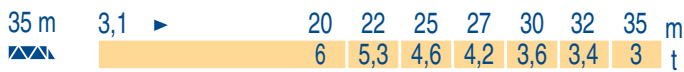
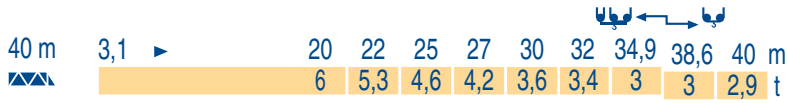
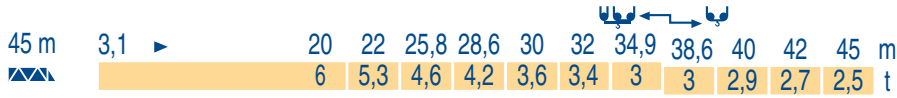
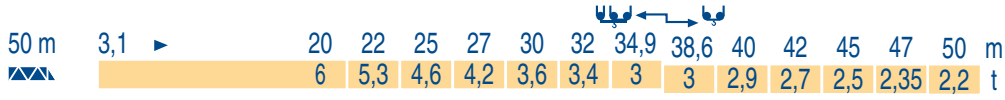
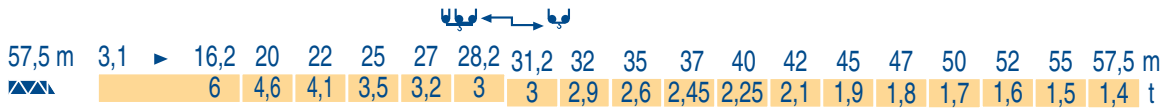
F See climbing crane
● Reactions in service
■ Reactions out of service
▲ Without load and ballast with longest jib and maximum height.

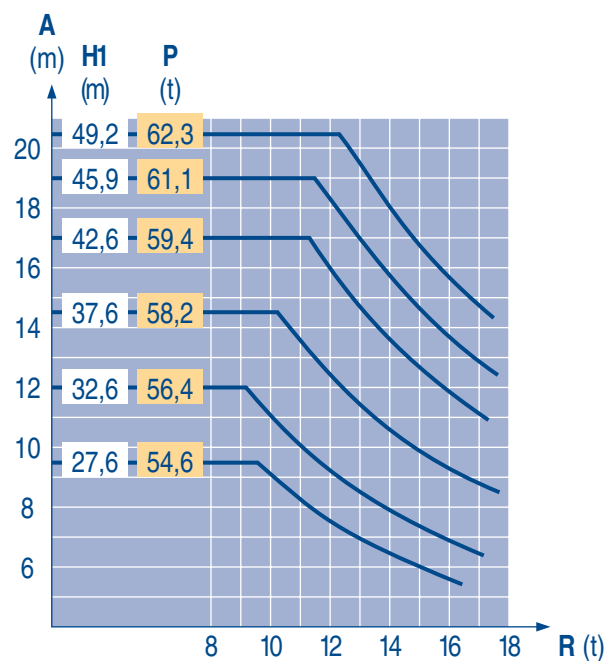
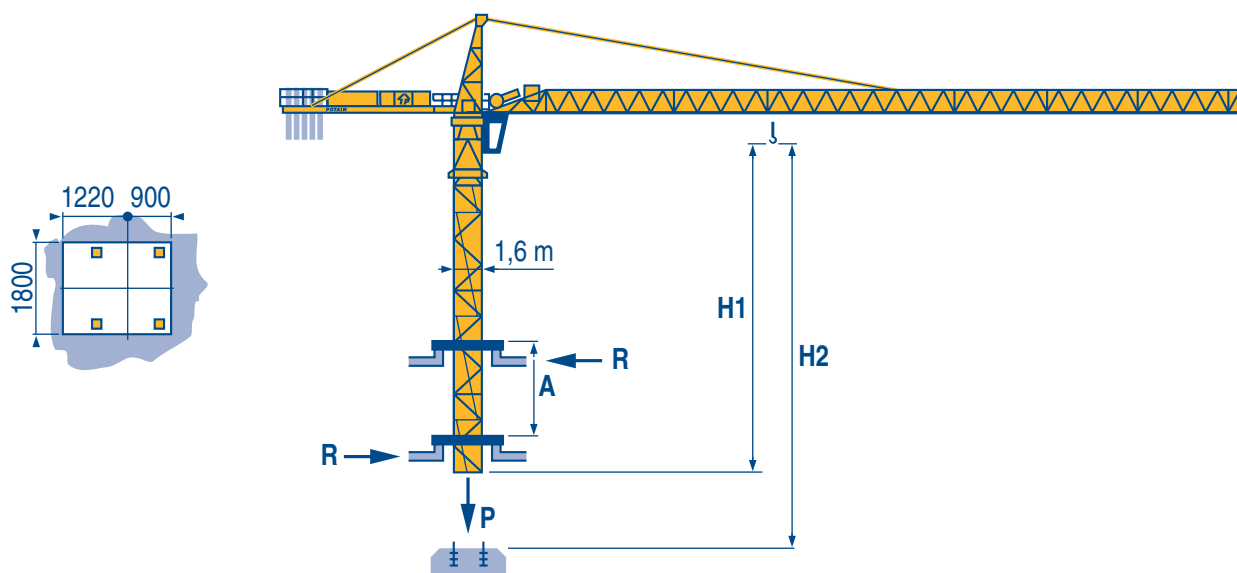
GB Consultare gru in cavedito
● Reazioni in servizio
■ Reazioni fuori servizio
▲ A vuoto senza zavorra e con braccio massimo e altezza massima.

D Siehe kletterkrane im gebäude
● Reaktionskräfte in Betrieb
■ Reaktionskräfte außer Betrieb
▲ Ohne Last und Ballast mit Maximalausleger und Maximalhöhe.

D Vea grua trepadora
● Reacciones en servicio
■ Reacciones fuera de servicio
▲ Sin carga, sin lastre con flecha y altura máxima.

E 见楼板顶升
● 工作状态下的反应
■ 非工作状态下的反应
▲ 空载, 无配重, 起重臂和高度均为最大值





LNQ 1

A Distance entre cadres
H1 Hauteur grue
P Poids de la grue (en service)
R Réaction horizontale

F

Distance between collars
Crane height
Crane weight (in service)
Horizontal reaction

GB

Distanza fra i telai
Altezza gru
Peso della gru (in servizio)
Reazione orizzontale

I

A Abstand zwischen den Rahmen
H1 Kranhöhe
P Krangewicht (in Betrieb)
R Horizontalkräfte

D

Distancia entra marcos
Altura grúa
Peso de la grúa (en servicio)
Reaccion horizontal

E

各附着框之间距离
工作状态下塔机高度
工作状态下塔机重量
水平反力

C

Lest de contre-flèche
Gegenauslegerballast



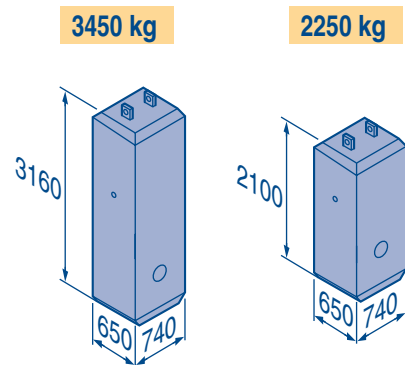
Counter-jib ballast
Lastre de contra flecha



Contrappeso
平衡臂重



		3450 kg	2250 kg	(kg)
57,5 m	14,3 m	5	-	17 250
55 m	14,3 m	4	1	16 050
50 m	13 m	4	1	16 050
45 m	13 m	3	2	14 850
40 m	13 m	4	-	13 800
35 m	13 m	3	1	12 600
30 m	13 m	2	2	11 400



LNQ 1

Lest de base
Grundballast



Base ballast
Lastre de base



Zavorra di base
压重



□1,6 m	ZC 40 A ◀●▶	H (m)	40,3	30,3	20,3						
		(t)	65	60	55						
□1,6 m	ZD 40 A ◀●▶	H (m)	50,3	40,3	30,3	20,3					
		(t)	70	55	45	45					
□1,6 m	S 40 A ◀●▶	H (m)	51,4	48,1	44,8	39,8	34,8	29,8	24,8	19,8	
		(t)	84	72	54	36	36	36	36	36	
□1,6 m	S 41 A ◀●▶	H (m)	58,1	54,8	49,8	44,8	39,8	34,8	29,8	24,8	19,8
		(t)	114	102	78	54	36	36	36	36	36

LNQ 1

		U				UU				ch - PS hp	kW		
	33 PC 15	m/min	—	6	37,5	75	—	3	19	37,5	33	24	320 m > 320
		t	—	3	3	1,5	—	6	6	3			
	33 LVF 15	m/min	4,6	12	37,5	75	2,3	6	19	37,5	33	24	320 m > 320
		t	3	3	3	1,5	6	6	6	3			
	45 RCS 15	m/min	—	—	0 → 52,5	0 → 105	—	—	0 → 26	0 → 52	45	33	472 m > 472
		t	—	—	3	1,5	—	—	6	3			
	4 D3 V3	m/min	15 - 30 - 58								4	3	
	RCV 145	tr/min U/min rpm	0 → 0,8								2 x 6	2 x 4,4	
ZC 40 A ZD 40 A 	RT 224	m/min	25								2 x 4	2 x 2,9	
S 40 A 	RT 324	m/min	12,5 - 25								2 x 7	2 x 5,2	
R ≥ 10 m H ≤ 34,8 m	TCV 449 ARC	m/min	10 - 50								4 x 6,8	4 x 5	
S 41 A 	RT 443 A1 2V	m/min	15 - 30								4 x 5	4 x 3,7	
R ≥ 10 m H ≤ 34,8 m	TCV 449 ARC	m/min	10 - 50								4 x 6,8	4 x 5	

CEI 38	IEC 38	kVA	
400 V (+6% -10%) 50 Hz		33 PC : 50 kVA 33 LVF : 50 kVA 45 RCS : 65 kVA	84/534 - 87/405

LNQ 1

	Levage	F	Hoisting	GB	Sollevamento	I
	Distribution		Trolleying		Distribuzione	
	Orientation		Slewing		Rotazione	
	Translation		Travelling		Traslazione	
	Conforme aux directives CEE 84/534 et 87/405 sur le niveau acoustique		In compliance with the EEC 84/534 and 87/405 Instructions on noise level		Conforme alle direttive CEE 84/534 e 87/405 sul livello acustico	
	Nous consulter		Consult us		Consultateci	
	Heben	D	Elevación	E	起升	C
	Katzfahren		Distribución		变幅	
	Schwenken		Orientación		回转	
	Kranfahren		Traslación		行走	
	Gemäss EWG-Richtlinien 84/534 und 87/405 für den Schall-Leistungspegel		Conforme con las directivas CEE 84/534 y 87/405 sobre el nivel acustico		符合 CEE 84/534 - CEE 87/405 声晌度规定	
	Auf Anfrage		Consultarnos		请向我方咨询	

Réf. 1997.48 LNQ 1



18.Rue de Charbonnières, B.P. 173-F
69132 ECULLY Cedex
Tél. (33)04.72.20.20.20
Fax (33)04.72.20.20.00
http://www.potain.fr
E-mail : mkt@potain.fr

CITY CRANE MD 125 A

Copyright.Reproduction interdite © POTAIN 1997

Deutschland
POTAIN GmbH Tel : 06.105.704.0
Italia
POTAIN S.p.A. Tel : 039.65.631
China
Zhangjiagang POTAIN Tel : 520. 877.1451

Modificazioni riservate / Modificaciones reservadas / Modifications réservées / Änderungen vorbehalten / Subject to modification / Subject to modification / 修改权在我方 / Réalisation SODIPE